

Entry Rules

Screenshot1

- Buy signal of a particular pair will be generated once all the selected indicators agree in up (if pair is selected). (Refer to screenshot2,3)

- Four Symphonie Indicator are in green
- Stochastic (Optional) 1 and 2 are in green
- Current PA is above EMA5 (Optional); panel is in green

SYMPHONIE
EXT TRE EMO SEN
■ ■ ■ ■

STO1 STO2
■ ■

EMA5_PA
EMA5 PA
0.7501 0.7503

- Sell signal of a particular pair will be generated once all the selected indicators agree in down (if pair is selected). (Refer to screenshot2,3)

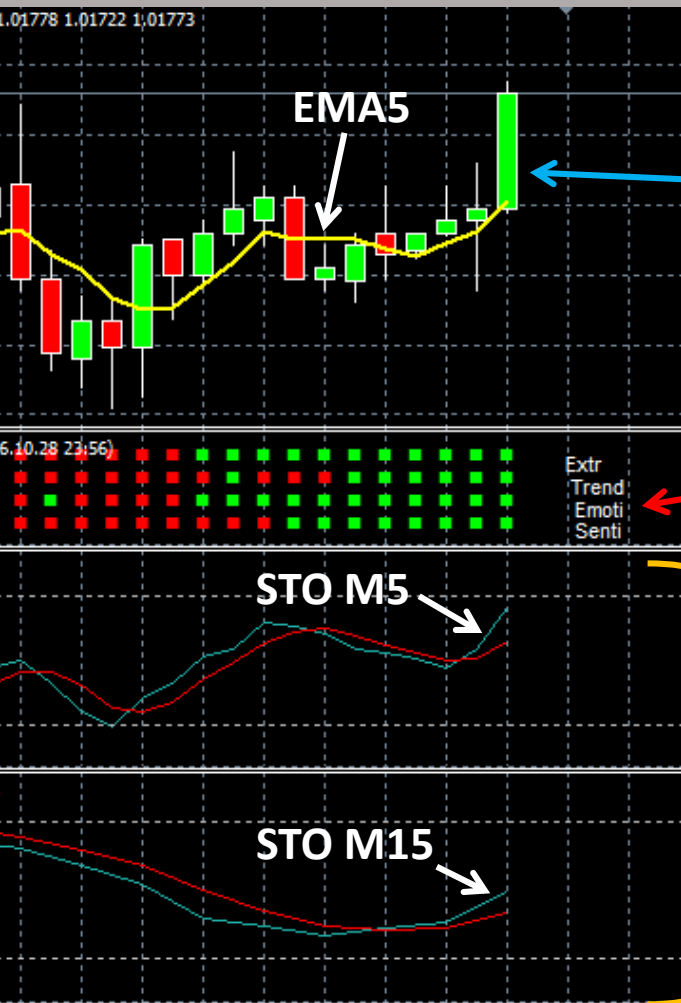
- Four Symphonie Indicator are in red
- Stochastic (Optional) 1 and 2 are in red
- Current PA is below EMA5 (Optional); panel is in red

SYMPHONIE
EXT TRE EMO SEN
■ ■ ■ ■

STO1 STO2
■ ■

EMA5_PA
EMA5 PA
79.57 79.55

Screenshot2



Current PA is above EMA5

Trading		SYMPHONIE				Sto		EMA5_PA	
AUDCAD	2.8	EXT	TRE	EMO	SEN	STO1	STO2	EMA5	PA
								1.0173	1.0177

Symphonie Indi all agree in green

STO1 and 2 all agree in green (upwards)

Screenshot3

Trading

Pair	Sprd	EXT	TRE	EMO	SEN	STO1	STO2	EMA5	PA
AUDCAD	1.1							1.0188	1.0188
AUDCHF	1.1							0.7521	0.7519
AUDJPY	0.5							79.83	79.79
AUDNZD	1.6							1.0634	1.0630
AUDUSD	0.5							0.7603	0.7600
CADCHF	1.0							0.7382	0.7380
CADJPY	0.9							78.36	78.31
CHFJPY	1.0							106.14	106.11
EURAUD	1.4							1.4397	1.4403
EURCAD	1.2							1.4668	1.4674
EURCHF	0.8							1.0829	1.0830
EURGBP	0.3							0.9004	0.9003
EURJPY	0.7							114.94	114.93
EURNZD	2.9							1.5311	1.5310
EURUSD	0.0							1.0946	1.0947
GBPAUD	2.2							1.5989	1.5997
GBPCAD	1.6							1.6290	1.6298
GBPCHF	1.9							1.2026	1.2028
GBPJPY	1.0							127.65	127.64
GBPNZD	3.3							1.7004	1.7004
GBPUSD	0.6							1.2157	1.2158
NZDCAD	1.8							0.9579	0.9584
NZDCHF	1.5							0.7072	0.7073
NZDJPY	1.3							75.07	75.06
NZDUSD	0.4							0.7149	0.7149
USDCAD	0.4							1.3400	1.3406
USDCHF	0.6							0.9893	0.9894
USDJPY	0.3							105.00	104.99

Buy	Sell	Symbol	Profit
0.00	0.00	AUDCAD	0.00
0.00	0.00	AUDCHF	0.00
0.00	0.00	AUDJPY	0.00
0.00	0.00	AUDNZD	0.00
0.00	0.00	AUDUSD	0.00
0.00	0.00	CADCHF	0.00
0.00	0.00	CADJPY	0.00
0.00	0.00	CHFJPY	0.00
0.00	0.00	EURAUD	0.00
0.01	0.00	EURCAD	1.02
0.00	0.00	EURCHF	0.00
0.00	0.00	EURGBP	0.00
0.00	0.00	EURJPY	0.00
0.00	0.00	EURNZD	0.00
0.00	0.00	EURUSD	0.00
0.01	0.00	GBPAUD	0.94
0.00	0.00	GBPCAD	0.00
0.00	0.00	GBPCHF	0.00
0.00	0.00	GBPJPY	0.00
0.00	0.00	GBPNZD	0.00
0.00	0.00	GBPUSD	0.00
0.00	0.00	NZDCAD	0.00
0.01	0.00	NZDCHF	1.02
0.00	0.00	NZDJPY	0.00
0.00	0.00	NZDUSD	0.00
0.01	0.00	USDCAD	1.02
0.00	0.00	USDCHF	0.00
0.01	0.00	USDJPY	0.09

Profit Baskets= 0

Basket TP = \$ 15.00

Loss Baskets= 0

Basket SL = \$- 15.00

Highest= \$ 3.63

Lowest= \$- -1.03

2.78

CLOSE ALL

CLOSE PROFIT

CLOSE LOSS

AutoTrade

ON

All

None

EUR

USD

GBP

JPY

AUD

CAD

NZD

CHF

GBPAUD,H1 1.97071 1.97190 1.96944 1.96971

Properties of GBPAUD,H1

ColorsCommon

Color scheme:

GBPAUD,H1 1.97071 1.97190 1.96944 1.96971

2.04030
2.02840
2.01650
2.00425
1.99235
1.98045
1.96971

27 May 16:00 31 May 00:00 1 Jun 08:00 2 Jun 16:00

Background:

Black

Foreground:

White

Grid:

None

Bar Up:

None

Bar Down:

None

Bull candle:

None

Bear candle:

None

Line graph:

None

Volumes:

None

Ask line:

None

Stop levels:

None

OK

Cancel

Reset

Screenshot4

4 Indicator Tick Status Panel

Trading

SYMPHONIE

EXT TRE EMO SEN

Pair

Sprd

EXT TRE EMO SEN

	AUDCAD	2.8
	AUDCHF	4.5
	AUDJPY	5.2
	AUDNZD	4.3
	AUDUSD	0.7
	CADCHF	4.7
	CADJPY	5.5
	CHFJPY	9.7
	EURAUD	4.4
	EURCAD	4.7
	EURCHF	4.2
	EURGBP	1.3
	EURJPY	7.1
	EURNZD	6.2
	EURUSD	0.6
	GBPAUD	7.0
	GBPCAD	7.9

1 Pair Tick Button

2 Pair Symbol Button

3 Spread Column

5 Symphonie Indicators Status Panel

6 Stochastic Status Panel



Sto		EMA5_PA	
STO1	STO2	EMA5	PA
■	■	■	
■	■	1.0173	1.0177
■	■	0.7501	0.7503
■	■	79.57	79.55
■	■	1.0603	1.0600
■	■	0.7597	0.7599
■	■	0.7372	0.7370
■	■	78.21	78.15
■	■	106.06	105.99
■	■	1.4458	1.4454
■	■	1.4710	1.4714
■	■	1.0848	1.0849
■	■	0.9012	0.9009
■	■	115.07	115.02
■	■	1.5331	1.5324
■	■	1.0985	1.0986
■	■	1.6041	1.6042
■	■	1.6320	1.6329

7 EMA5-PA Signal Panel



Screenshot6

8 Buy Button



9 Sell Button



10 Close Button



Buy Sell Symbol Profit

0.00	0.00	AUDCAD	0.00
0.00	0.00	AUDCHF	0.00
0.00	0.00	AUDJPY	0.00
0.00	0.00	AUDNZD	0.00
0.00	0.00	AUDUSD	0.00
0.00	0.00	CADCHF	0.00
0.00	0.00	CADJPY	0.00
0.00	0.00	CHFJPY	0.00
0.00	0.00	EURAUD	0.00
0.00	0.00	EURCAD	0.00
0.00	0.00	EURCHF	0.00
0.00	0.00	EURGBP	0.00
0.00	0.00	EURJPY	0.00
0.00	0.00	EURNZD	0.00
0.00	0.00	EURUSD	0.00
0.00	0.00	GBPAUD	0.00
0.00	0.00	GBPCAD	0.00
0.00	0.00	GBPCHF	0.00
0.00	0.00	GBPJPY	0.00
0.00	0.00	GBPNZD	0.00
0.00	0.00	GBPUSD	0.00
0.00	0.00	NZDCAD	0.00
0.00	0.00	NZDCHF	0.00
0.00	0.00	NZDJPY	0.00
0.00	0.00	NZDUSD	0.00
0.00	0.00	USDCAD	0.00
0.00	0.00	USDCHF	0.00
0.00	0.00	USDJPY	0.00

11 Buy Volume Column

12 Sell Volume Column

13 Symbol Column

14 Profit Column

Autotrade will open at most 1 position per pair based on signal generated. If signal occurs but position already exists for a particular pair, no order will be sent. However, you can manually click on 'B' and/or 'S' button to any number of positions you want (click once send one order).

Screenshot7

15 Profit Baskets

Profit Baskets=

0

16 Basket TP

Basket TP = \$

15.00

Highest= \$

0.00

17 Basket Highest

18 Loss Baskets

Loss Baskets=

0

19 Basket SL

Basket SL = \$-

15.00

Lowest= \$-

0.00

20 Basket Lowest

21 Current Basket
Profit

0.00

Screenshot8

22 Close All

CLOSE ALL

CLOSE PROFIT

23 Close Profit

CLOSE LOSS

24 Close Loss

Trading

25 Session Monitor Panel

26 AutoTrade Monitor Panel

27 Pair/Currency Selection Button

AutoTrade

ON

All

None

EUR

USD

GBP

JPY

AUD

CAD

NZD

CHF

Screenshot9

Variable	Value
Use AutoTrade	false
Send Alert upon Signal	false
Send Notification upon Singal	false
Single pair TP in pips (0=no TP)	25.0
Single pair SL in pips (0=no SL)	25.0
Timeframe for Symphonie, EMA and PA	DB_M15
Use Extreme	true
tdi_r	12
tdi_s	12
tdi_u	5
Use Trend	true
CCIPeriod	63
ATRPeriod	18
Use Emotion	true
SSP	7
Kmax	50.6
CountBars	3000
Use Sentiment	true
Sentiment Period	12
Use STO1	true
STO1 Timeframe	STO_M5
Use STO2	true
STO2 Timeframe	STO_M15
Stochastic K Period	8
Stochastic D Period	3
Stochastic Slowing Value	3
Stochastic Overbought Area	80.0
Stochastic Oversold Area	20.0
Use PA-EMA5	true
EMA Period	5
EMA Method	EMA
EMA Applied Price	MA_Typical_Price
Magic Number	12345
Lot Size	0.01
Basket TP in \$	15
Basket SL in \$	15
Max Spread	2.0

Once alert/notification of a particular pair has been sent, the next alert/notification of that pair will be sent after 5 minutes upon signal.

Screenshot10

Basket means all active (open) positions opened by this dashboard with the same magic number. The basket profit is the total profit of all these active positions

Load